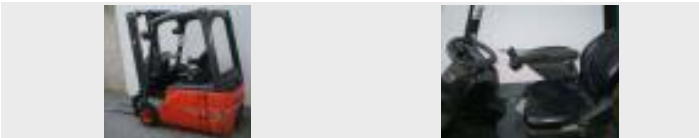




Original photo



**SALES INFORMATION**

**LINDE E 16/386**

Power unit	Electric
Type of truck	Three wheel counterbalanced forklift
Capacity (kg)	1600
Lift height (mm)	3145
Year of manufacture	2008
Quality rating	★★★★
<b>Price</b>	<b>26,900 €</b> Prices excluding VAT

**CONTACT TO SELLER**



**Linde - Gruma Fördertechnik GmbH**  
 Daimlerstrasse 4  
 85748 Garching-Hochbrück  
[www.gruma.de](http://www.gruma.de)

**Karl Neumeier**  
 ☎ +49 (0) 89-32939924  
 📠 +49 (0) 89-32939925  
 ✉ karl.neumeier@gruma.de

**FURTHER TECHNICAL DETAILS**

Dealer product no.	29323	Battery	Yes
Supralift product no.	2455711E	Battery manufacturer	Batt.-A, Bj. 08 5 PzS
Load centre of gravity (mm)	500	Battery voltage (V)	48
Mast type	Duplex	Battery capacity (Ah)	575
Overall height (mm)	2121	Battery charger	Yes
Free lift (mm)	1518	Serial number	29323
Fork length (mm)	1200	Comment	Werkstattrepariert, lackiert, Kundendienst-UVV neu mit Prüfbuch
Hour meter reading (h)	750	Accessories	LDG, Batt.-A, Bj. 08 48V 5 PzS 575Ah, EZH, FSD1, SE, ASW, C-SS, Batt.Tür 180 Grad, LFM-Basic