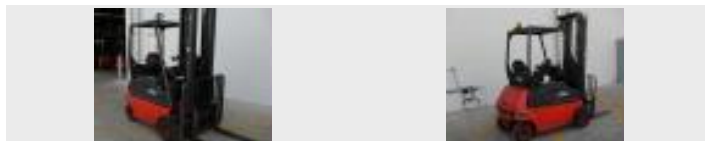




Original photo



**SALES INFORMATION**

**LINDE E 18 P**

|                     |  |
|---------------------|--|
| Power unit          | Electric                                   |
| Type of truck       | Four wheel counterbalanced forklift        |
| Capacity (kg)       | 1800                                       |
| Lift height (mm)    | 5920                                       |
| Year of manufacture | 2004                                       |
| Quality rating      | ★ ★ ★                                      |
| <b>Price</b>        | <b>21,000 AU\$</b><br>Prices excluding GST |

**CONTACT TO SELLER**



**Linde MH Australia - Brisbane**  
 64 Axis Place  
 4110 Larapinta  
 www.lindemh.com.au

**David Linfoot**

+61 (0) 412 162 249  
 +61 (0) 7 3013 5150  
 david.linfoot@lindemh.com.au

**FURTHER TECHNICAL DETAILS**

|                             |   |
|-----------------------------|---|
| Dealer product no.          | U23372  |
| Supralift product no.       | 2777988E  |
| Warranty                    | 3<br>3 months or 500 hours<br>whichever occurs first in<br>Brisbane metropolitan area<br>only |
| Load centre of gravity (mm) | 600   |
| Mast type                   | Triplex   |
| Fork length (mm)            | 1100  |
| Hour meter reading (h)      | 5735  |
| Battery                     | Yes   |
| Battery manufacturer        | Exide   |
| Battery year of manufacture | 2005  |
| Battery voltage (V)         | 48  |
| Comment                     | Low hours   |
| Accessories                 | Twin pedals, full OHG, working lamps front  |

|                       |   |
|-----------------------|---|
| Battery capacity (Ah) | 775   |
| AC drive              | No  |
| Tyres                 | Drive Wheels 200/50-10 Single<br>Solid<br>Steer Wheels 16x6-8 Solid |
| Serial number         | H2X335R05575  |
| Explosion protection  | No  |
| Cabin                 | No  |
| Attachment            | Sideshift   |